

Storstrømsbroen

*Niels Gottlieb, Projektchef
Vejdirektoratet Denmark*



Storstrømsbroen

Bygherre



Udbudsprojekt



Totalentreprenør



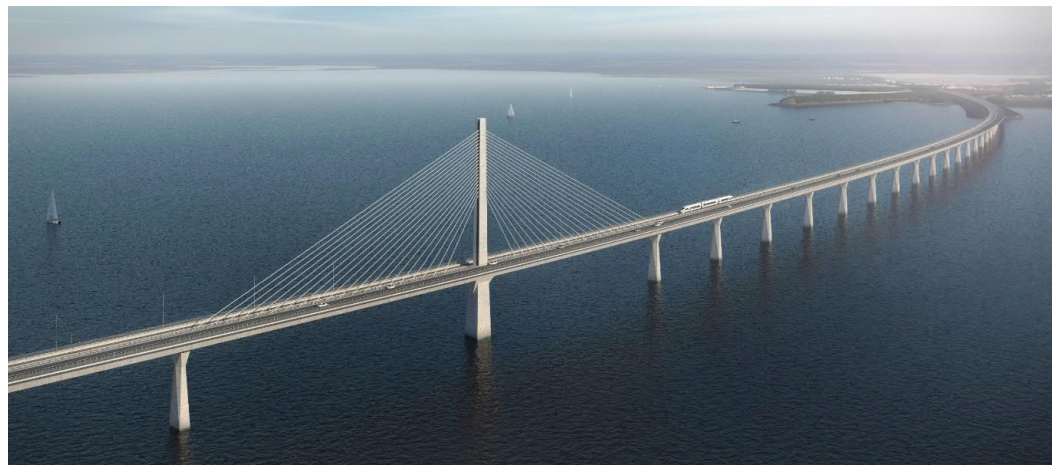
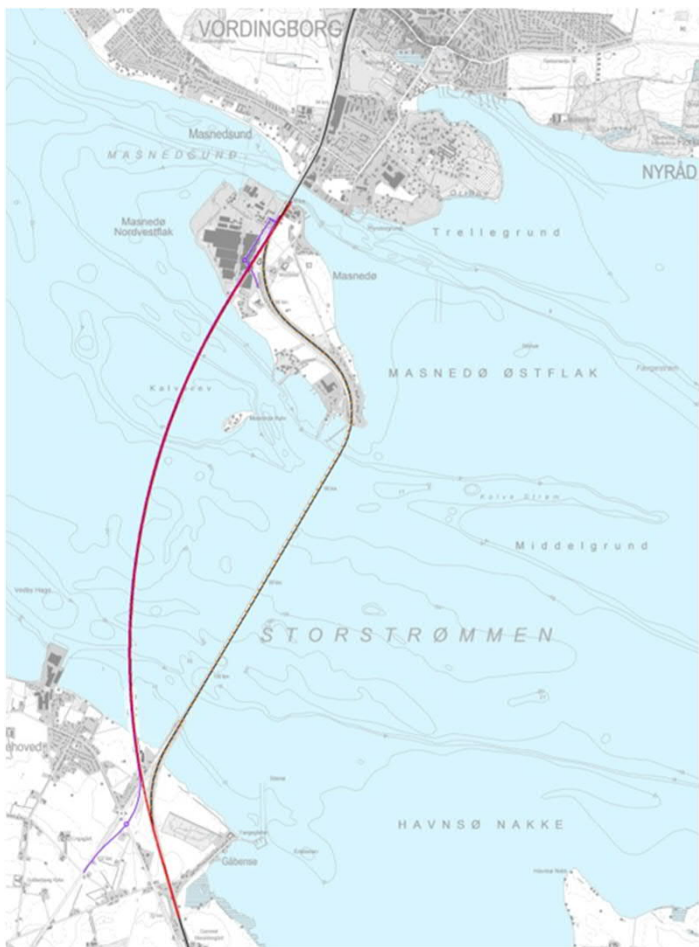
Basic and Detailed Design



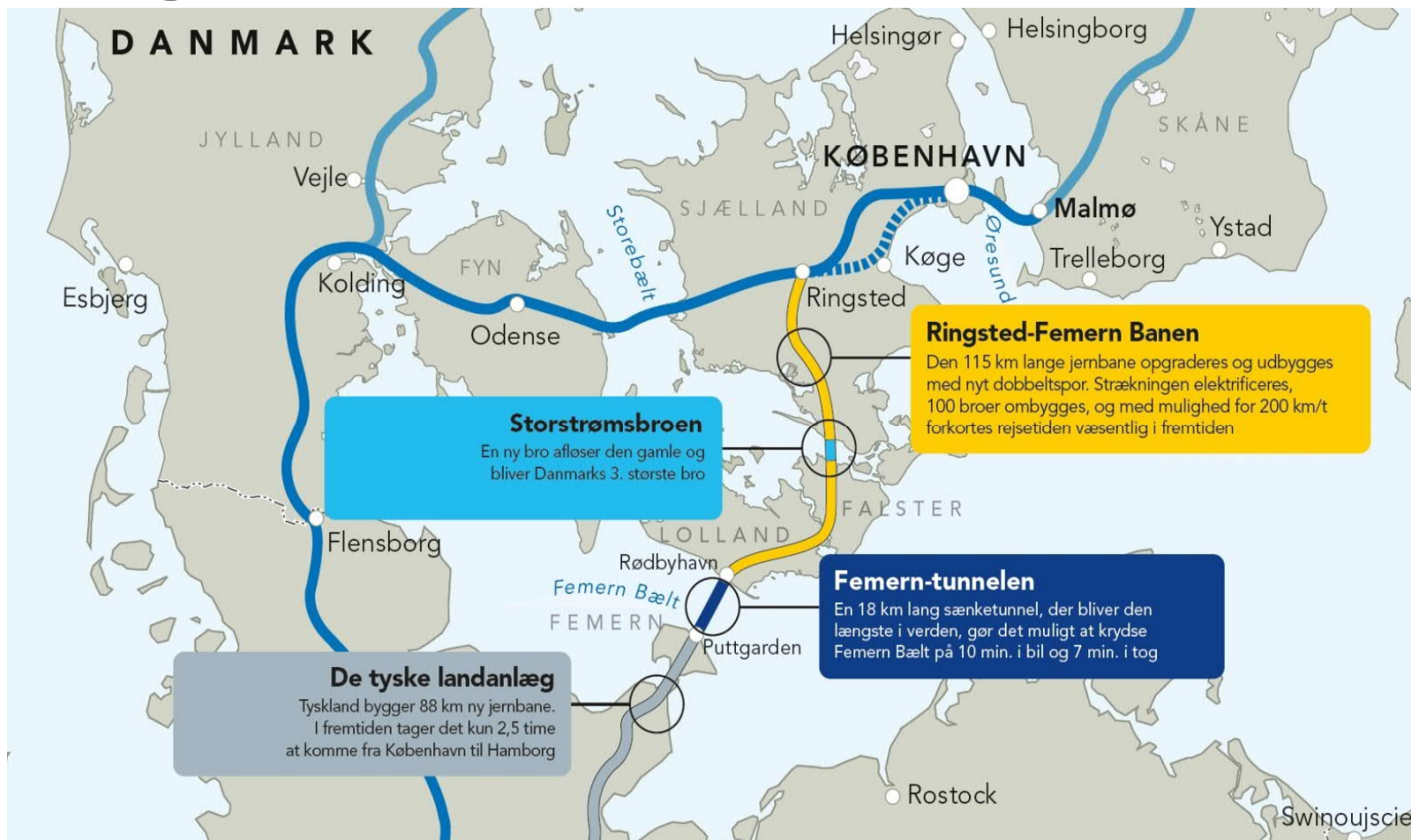
Independent Checker



Ny Storstrømsbro erstatter den gamle dame



Ringsted-Femern Banen



Udbygning

- Dobbelt spor
- Kørestrøm (EP)
- ERTMS signal-system (SP)

Storstrømsbroen

Fakta

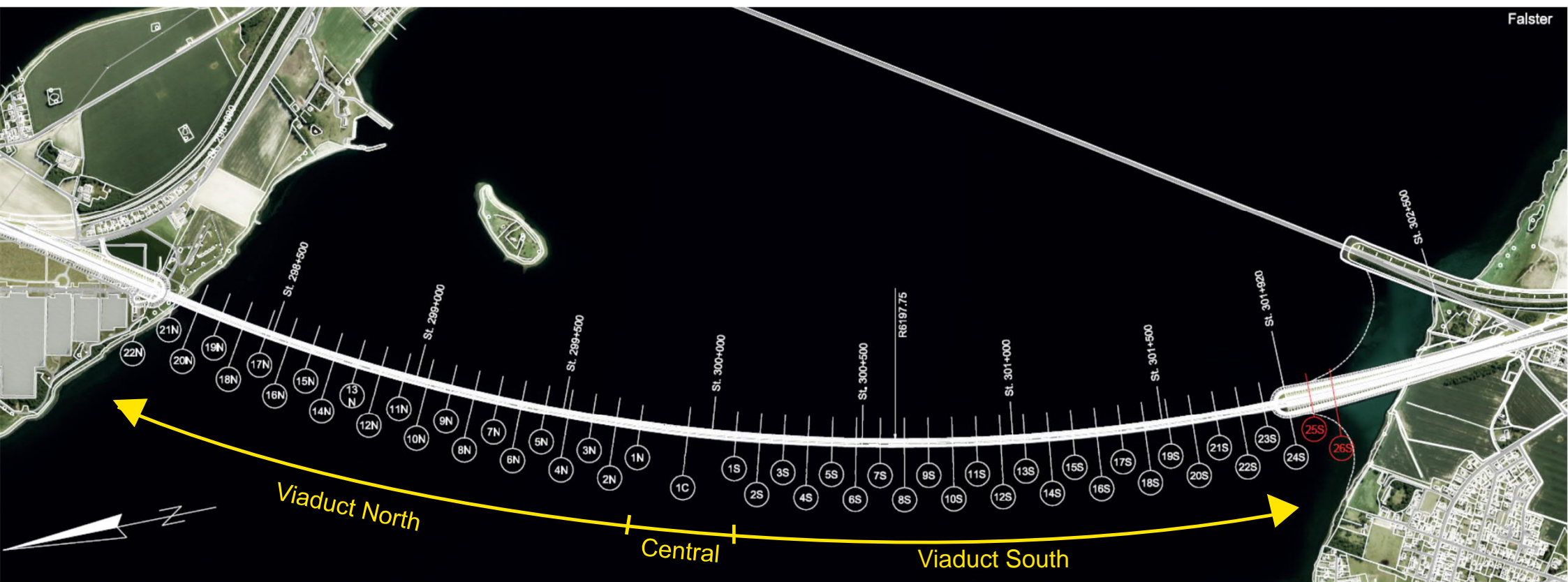
- Længde 3,832 m
- Bredde af 2 gennemsejlingsfag 160 m
- Gennemsejlingshøjde på 26 m
- Design hastighed for passagertog 200 km/h
- 2-sporet vej - 80 km/h
- Kombineret gang- og cykelsti

Anlægsbudget: 4,2 mia DKK (inkl. Nedrivning af eksist. bro)

Anlægsperiode: 2019-2024



Brodesign

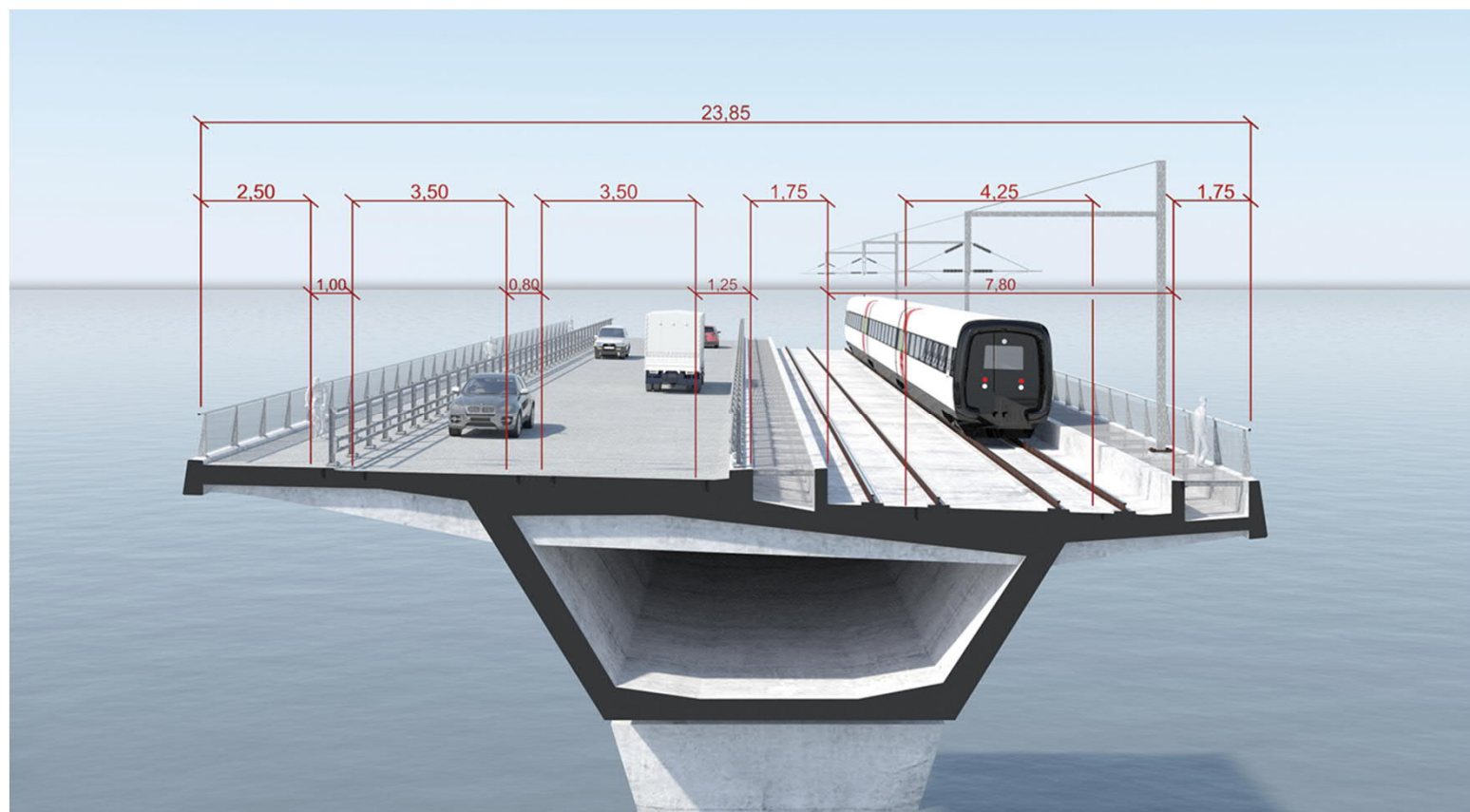


Brodesign



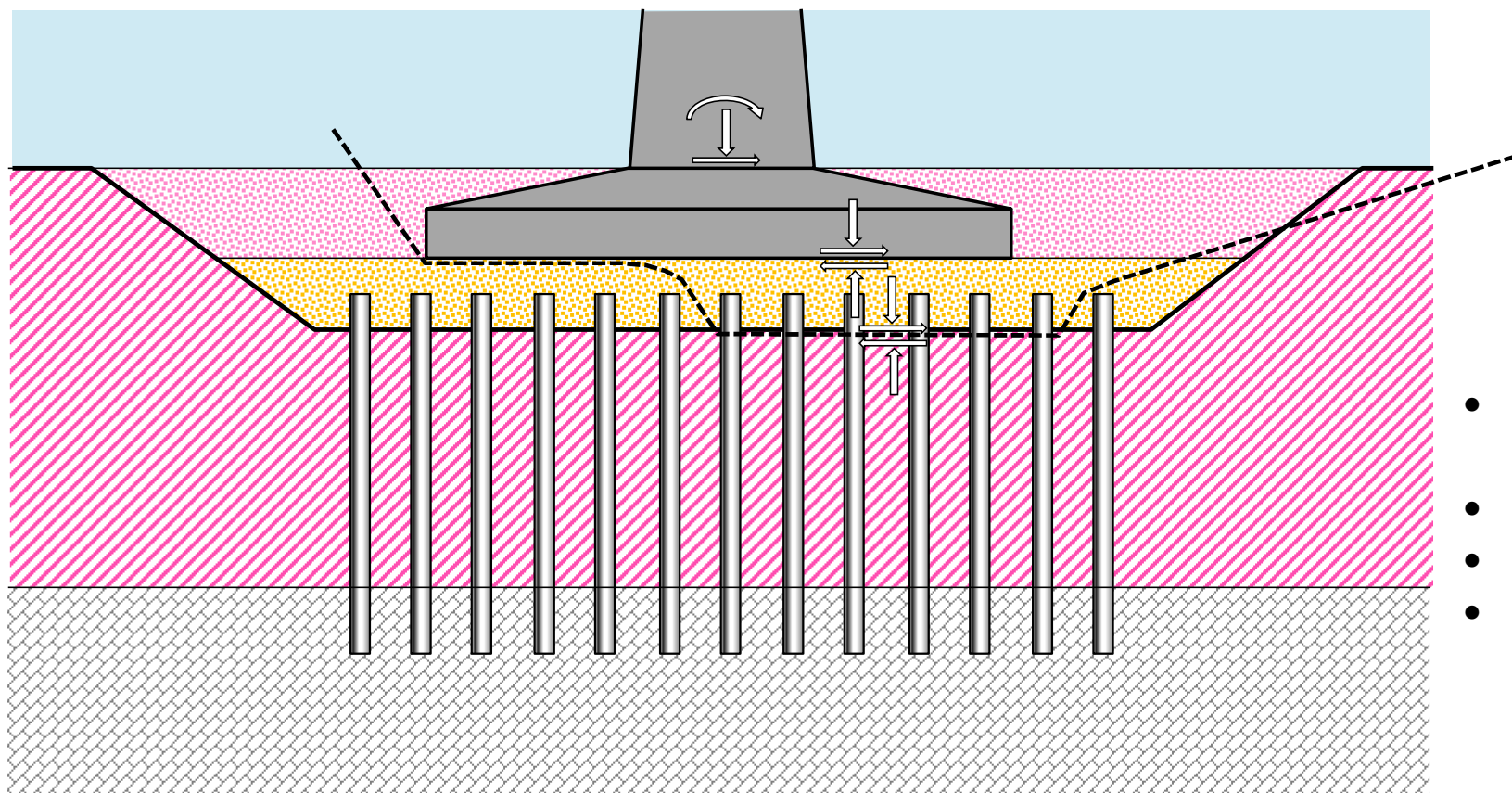
- Samlet længde 3832 m
- 44 brofag (80 m) Bjælkebro
- 2 centerfag (160 m) – kabelbårne
- Pylonhøjde 102 m over havet

Tværsnit



- Cykel-gangsti
- Kørebane
- Jernbane
- Nødfortov

Funderingsprincip



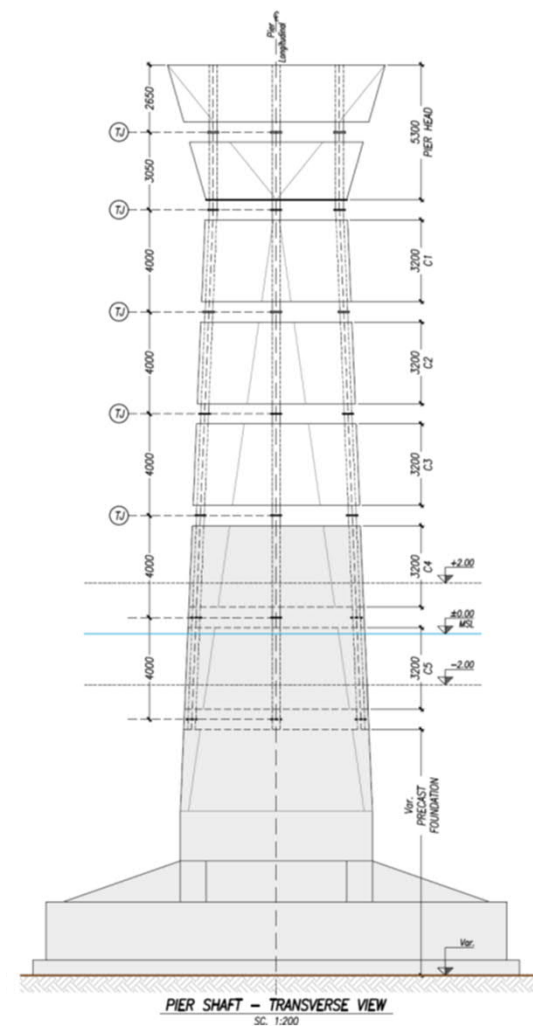
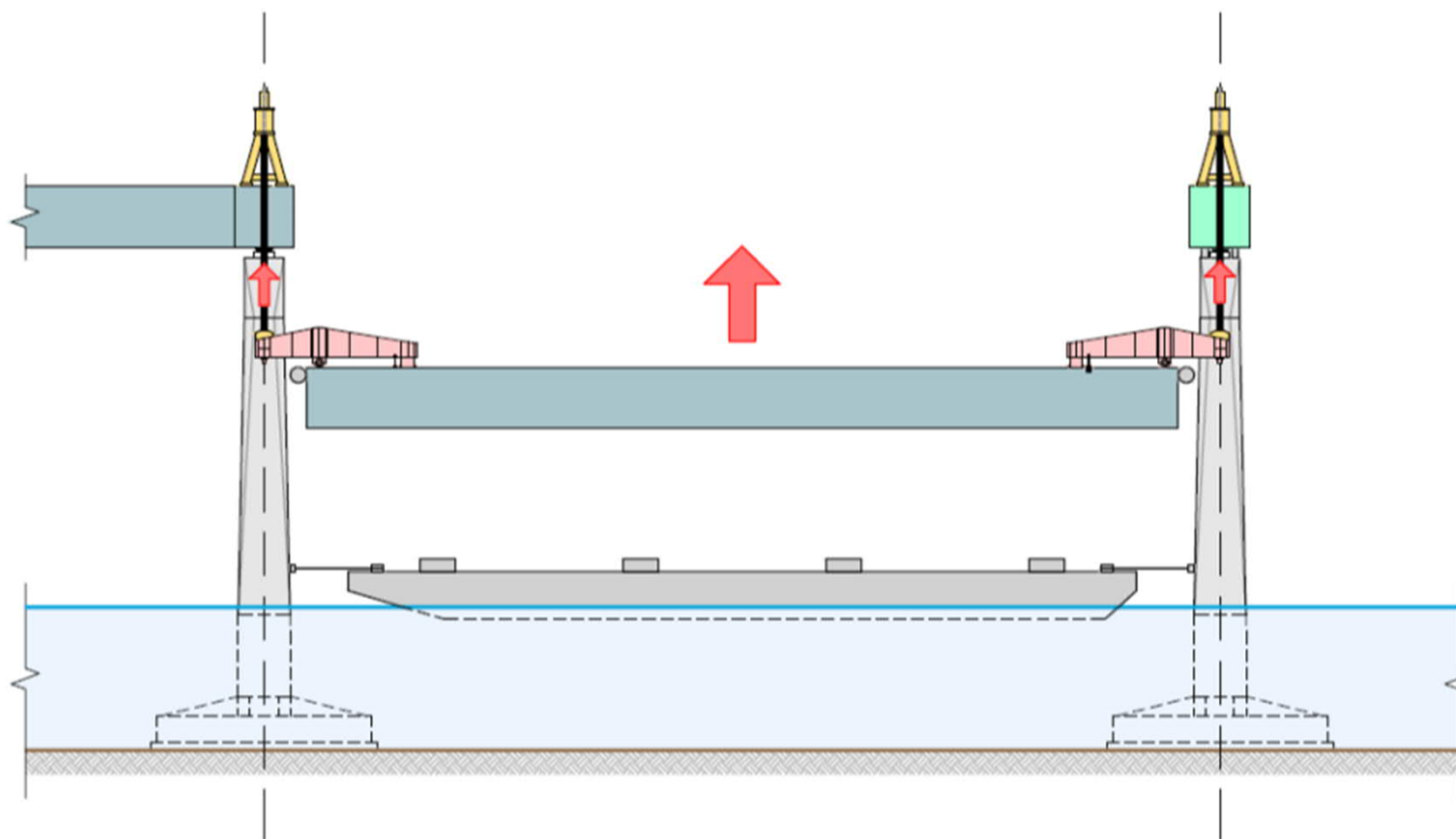
- Præstøbte caissoner på stenpude
- 12x20 m til 20x20 m
- Forstærkningspæle
- (12S, 1S, 1C, 1N)

A large construction barge is shown on the water. It features a prominent red gantry structure supported by several blue lattice towers. In the center of the barge, a large, dark grey rectangular structure is being positioned or prepared. The barge is equipped with various mechanical components, including red bollards and a black control box. The background shows a body of water and a distant shoreline under a cloudy sky.

Sådan bygger vi Storstrømsbroen

**Sådan bygger vi
Storstrømsbroen**

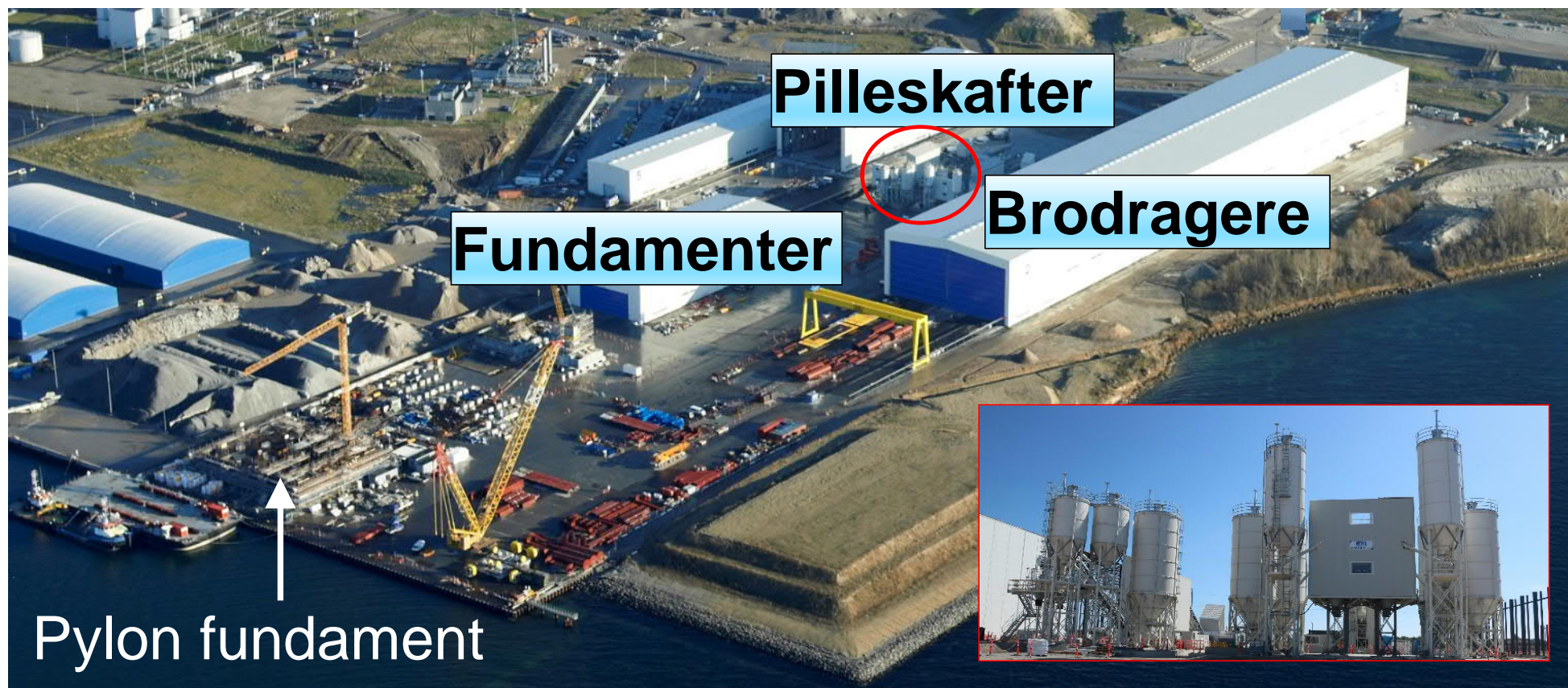
Konstruktionsmetode



Præfabrikationsplads



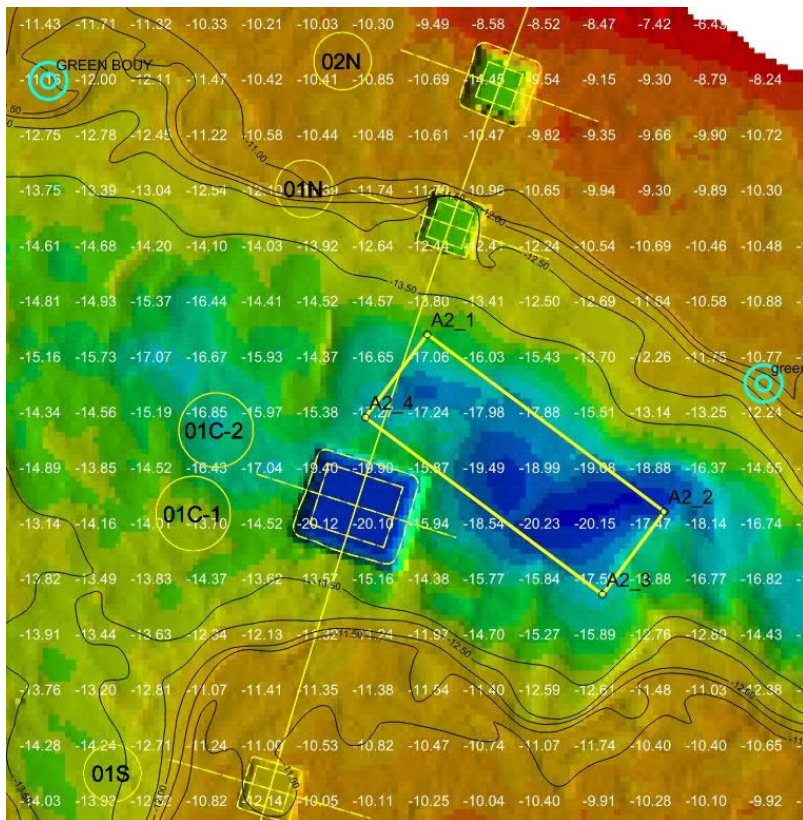
Præfabrikationsplads



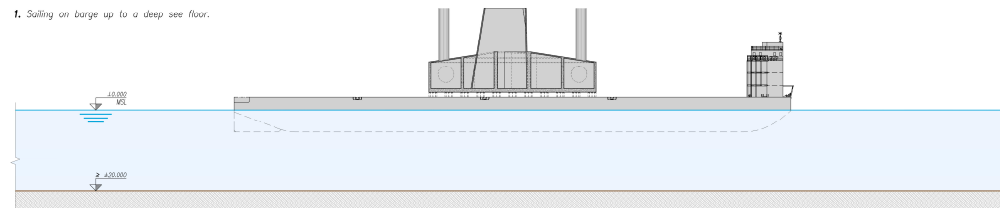
Pylonfundament



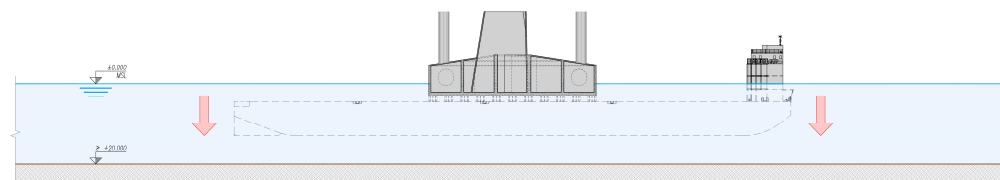
Pylonfundament



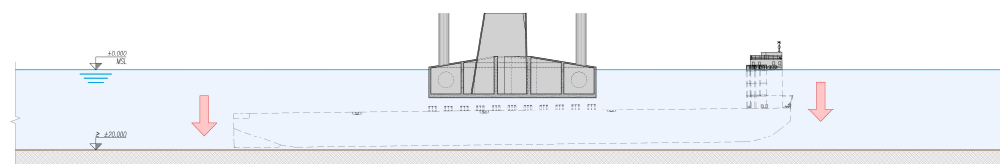
1. Sailing on barge up to a deep sea floor.



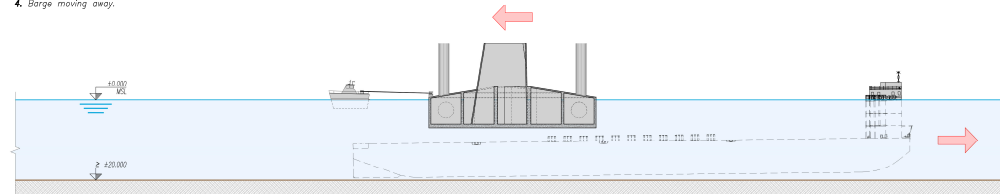
2. Barge sinking.



3. Pylinth floating.



4. Barge moving away.



Fundamenter



Pilleskaft element



Pilleskaftelement løftes på plads



Sammenstøbning



Transport på SPMT



Katamaran-kran opankret

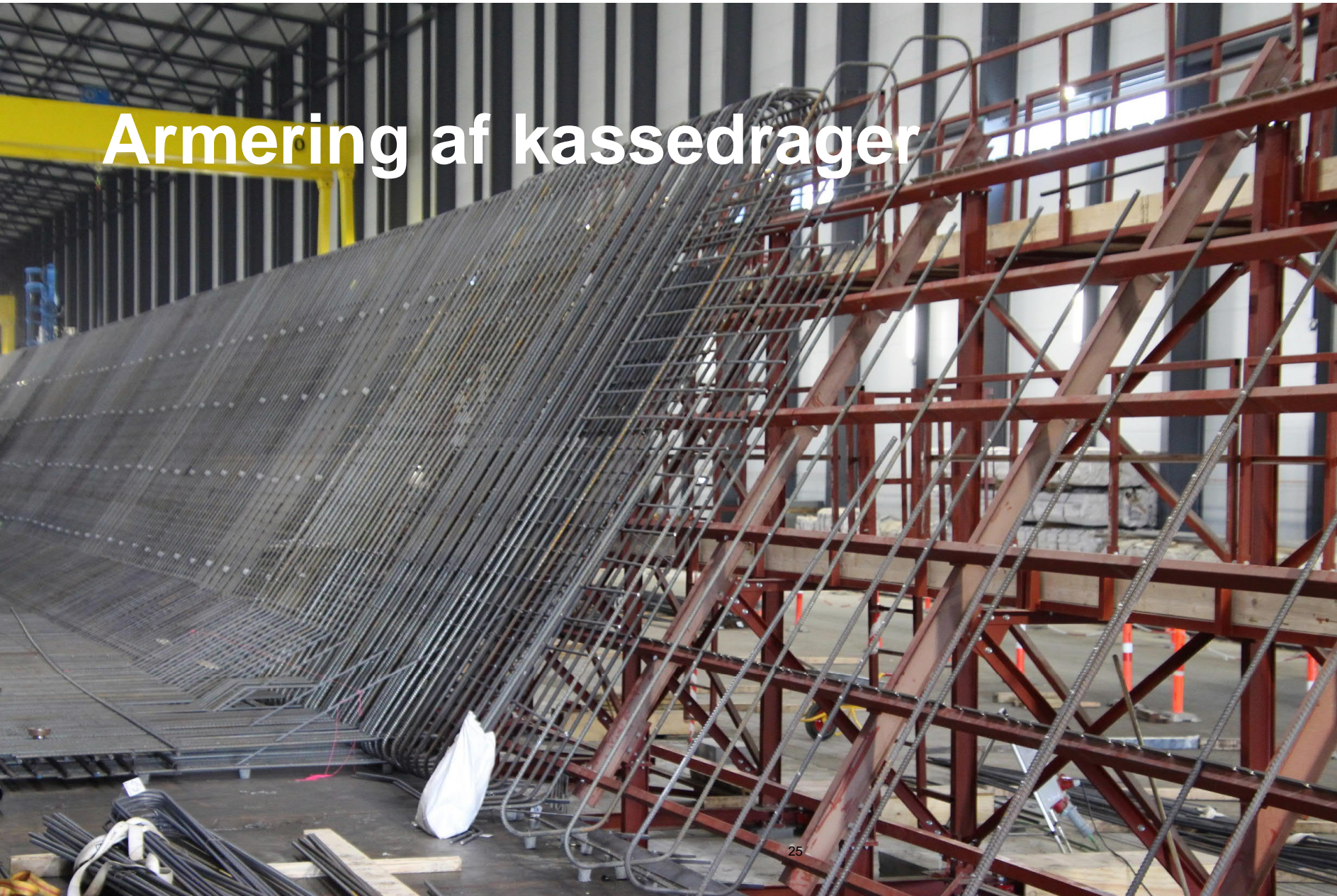


Fundament sænkes

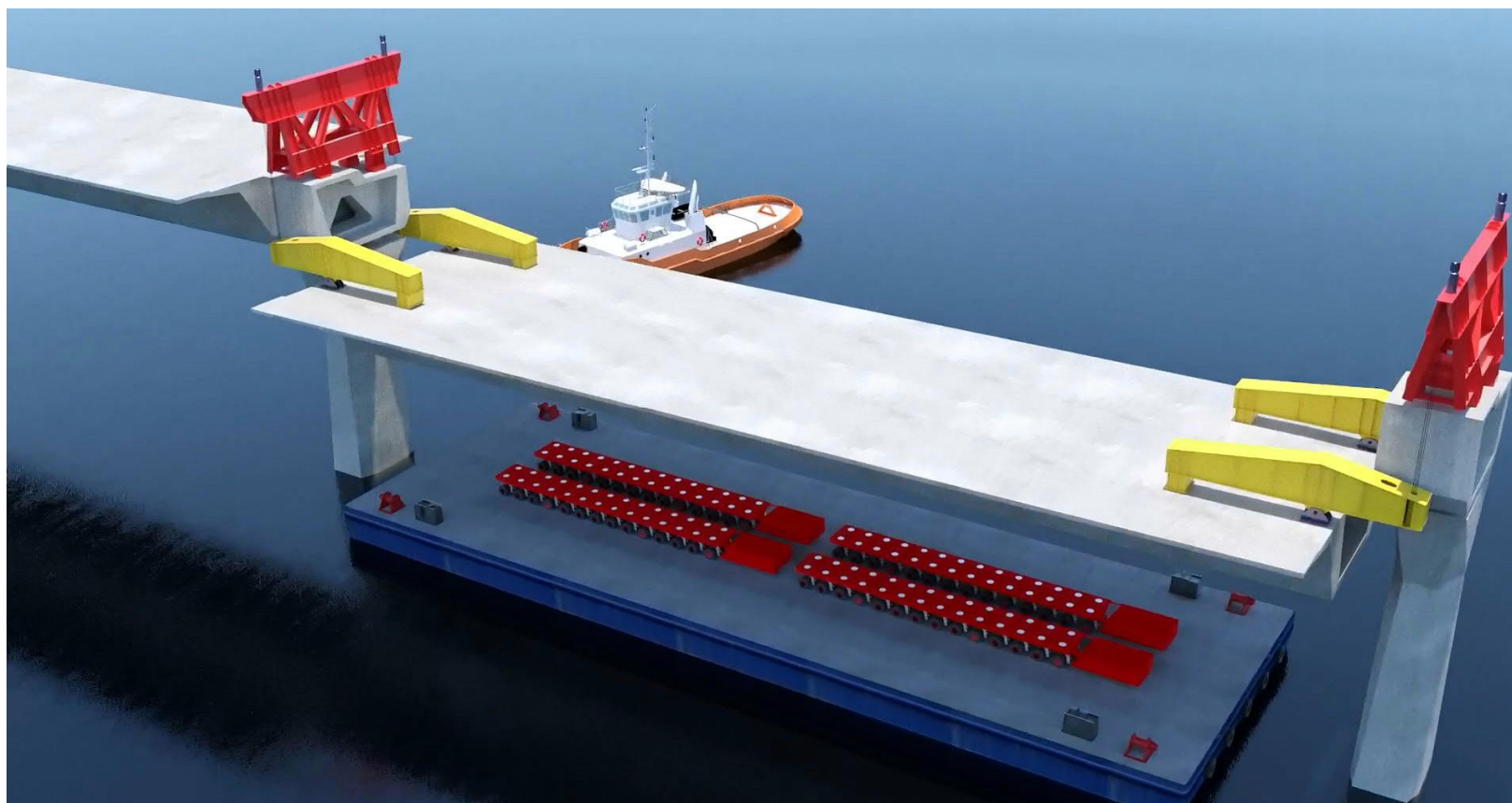


Elementproduktion

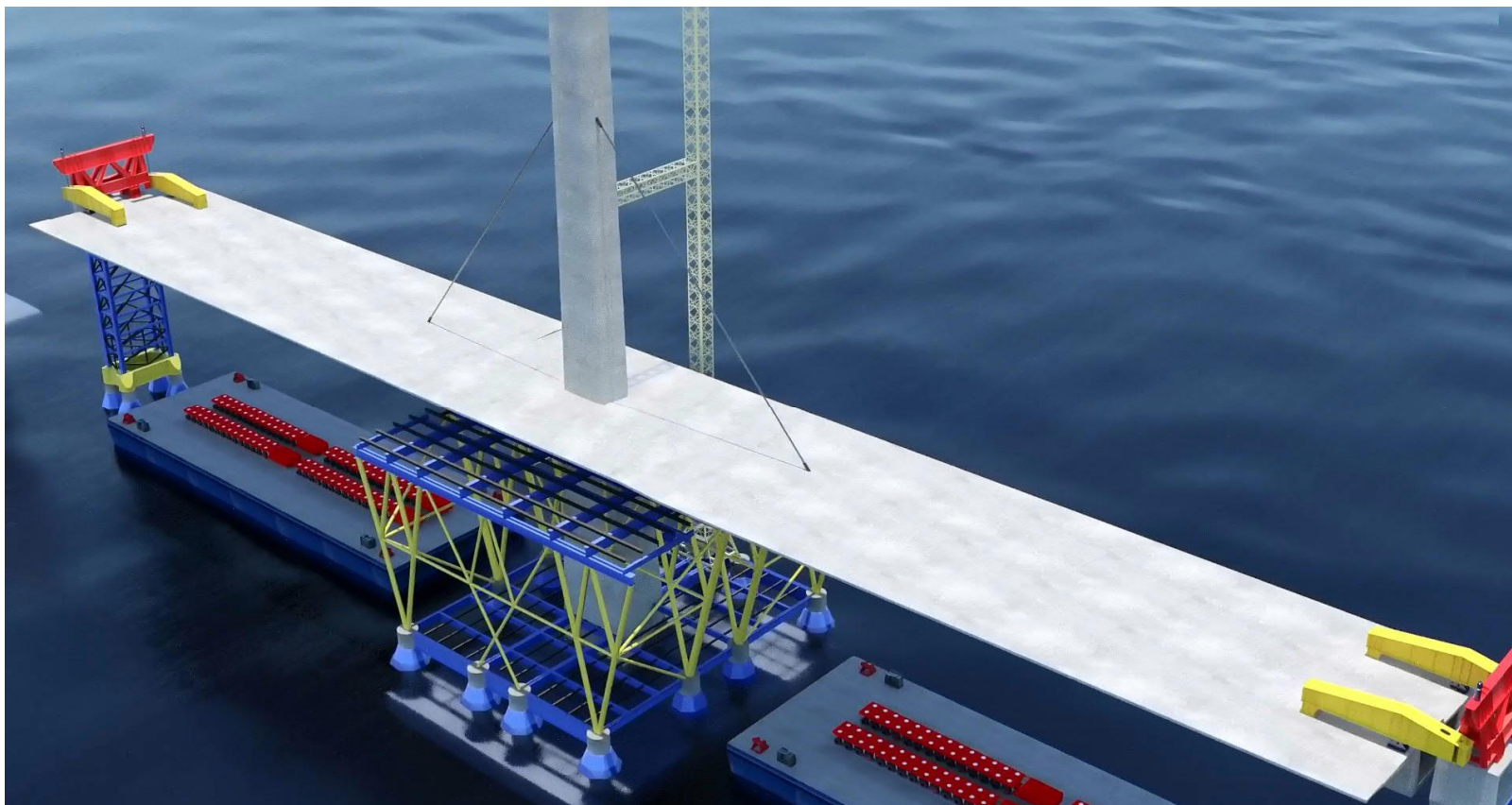
Armering af kassedrager



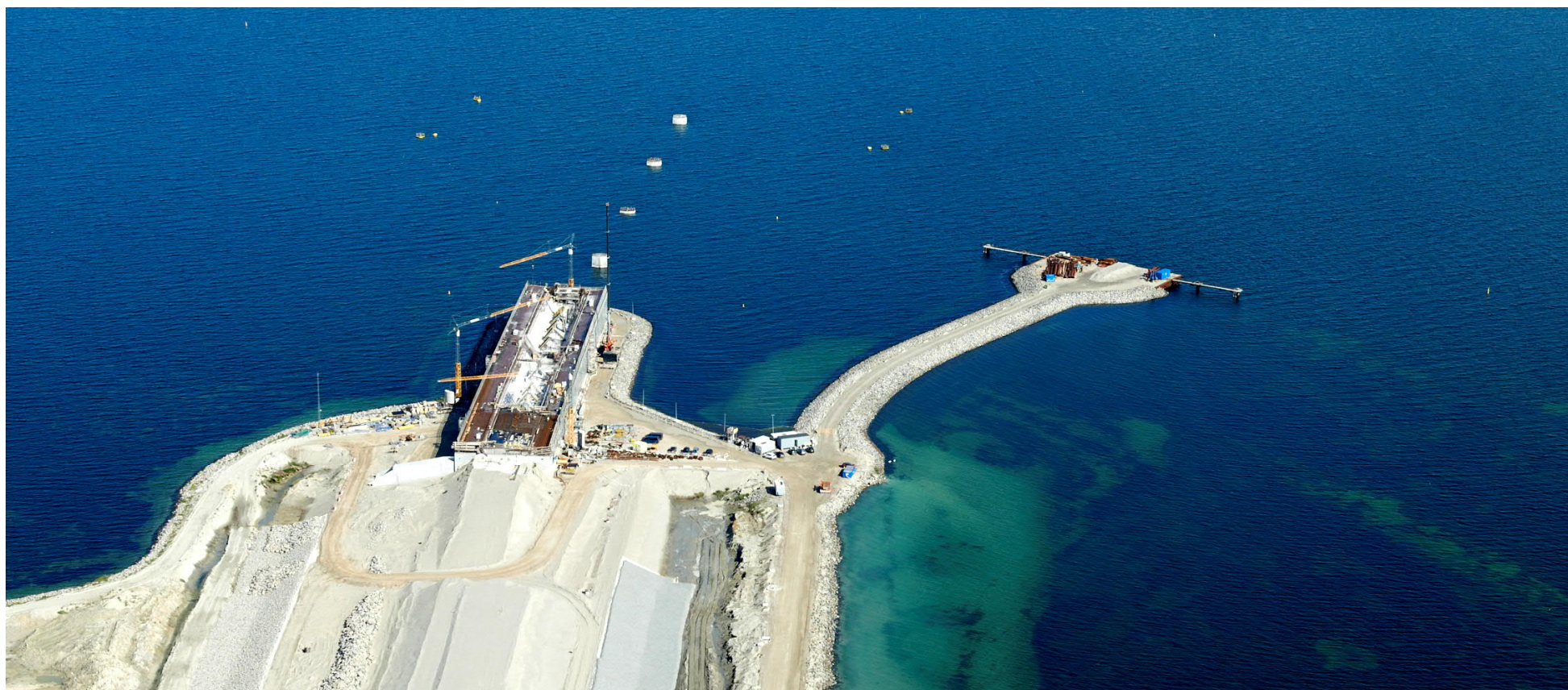
Montage af broelementer



Pylon og Centerfag



Status september 2021





Pylonfundament i oktober

Tak for opmærksomheden...

Mere information på:

www.vejdirektoratet.dk/projekt/storstroemsbroen